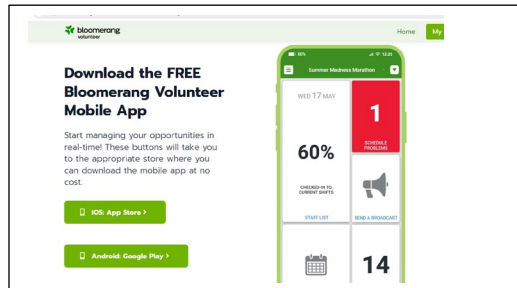
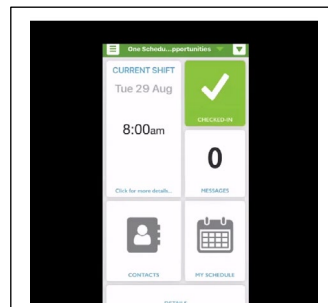


## How to use the Bloomerang Volunteer Mobile App!

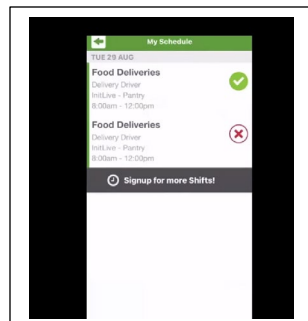
- This year, all volunteers will check-in/out exclusively using the Bloomerang Volunteer Mobile App for each shift you have selected to volunteer for.
- Download the Bloomerang Volunteer Mobile App for either your Android or iOS device.



- Login using the same email address and password used when you signed up to become a volunteer.
- The dashboard will include your list of shifts scheduled for the day and any messages delivered that day.

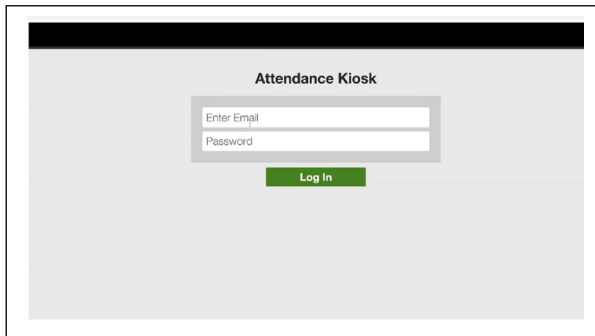


- Click the "Check-In" square, all shift details will appear and select the shift you are reporting for. The "red ⊗" will turn to a "green ☑". When you check-out, it will return to the "red ⊗".



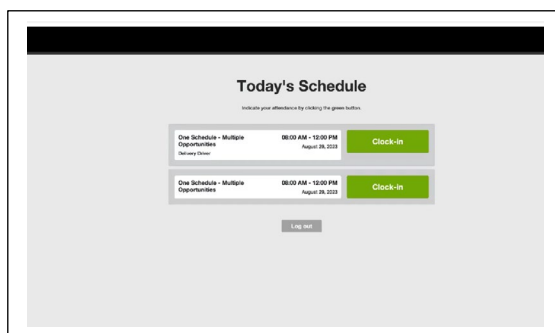
- If you are working multiple shifts in one day, please wait until you are ready to transition to the second shift to check-in. This will ensure your volunteer hours are accurate.

For those without a mobile device or unable to download the mobile app, an onsite Kiosk will be available for check-in/out.



The screenshot shows a web interface titled "Attendance Kiosk". It features a central form with two input fields: "Enter Email" and "Password". Below these fields is a green button labeled "Log In". The background is a light gray color.

- Login using the same email address and password used when you signed up to become a volunteer.
- Once logged in, you will immediately see your shift(s) scheduled for the day; select the "green" button and follow the prompts to confirm the shift you are reporting for.



The screenshot shows a web interface titled "Today's Schedule". Below the title is a small instruction: "Indicate your attendance by clicking the green button." There are two rows of schedule entries. Each row contains a box with the following text: "One Schedule - Multiple Opportunities", "08:00 AM - 12:00 PM", and "August 08, 2018". To the right of each box is a green button labeled "Clock-in". Below the schedule entries is a "Log out" button.

- If you are working multiple shifts in one day, please wait until you are ready to transition to the second shift to check-in. This will ensure your volunteer hours are accurate.